

www.neworiverfront.com

September 17, 2008

REINVENTING THE CRESCENT INSPIRATION





REINVENTING THE CRESCENT

IF INVESTMENTS: PUBLIC AND PRIVATE FUNDS

• State of Louisiana	\$162 M
• Local Government	
WTC Development	\$24 M
Julia St./ Market St. Development	\$13 M
CDBG Funding	\$30 M
• Federal Government	
Corps of Engineer (Levee Armor)	\$25 M
Department of Transportation	\$10 M
Department of Energy	\$10 M
• Private and Non-Profit	
Trust For Public Land	\$5 M
Audubon-Woldenberg Upgrades	\$5 M
Other Private Sources	<u>\$10 M</u>
TOTAL	\$294 M

* Plus over \$100 M of City owned Riverfront property.

REINVENTING THE CRESCENT DESIGN TEAM



REINVENTING THE CRESCENT DESIGN TEAM

“In this team New Orleans has landed a constellation of full force professionals at their peak, whose confidence and experience seems appropriately tempered by their awe and excitement about taking on the challenge for New Orleans. Pittsburgh is jealous.”

- Lisa Schroeder, Director, Pittsburgh Riverlife Taskforce



new orleans riverfront
**Reinventing
the Crescent**

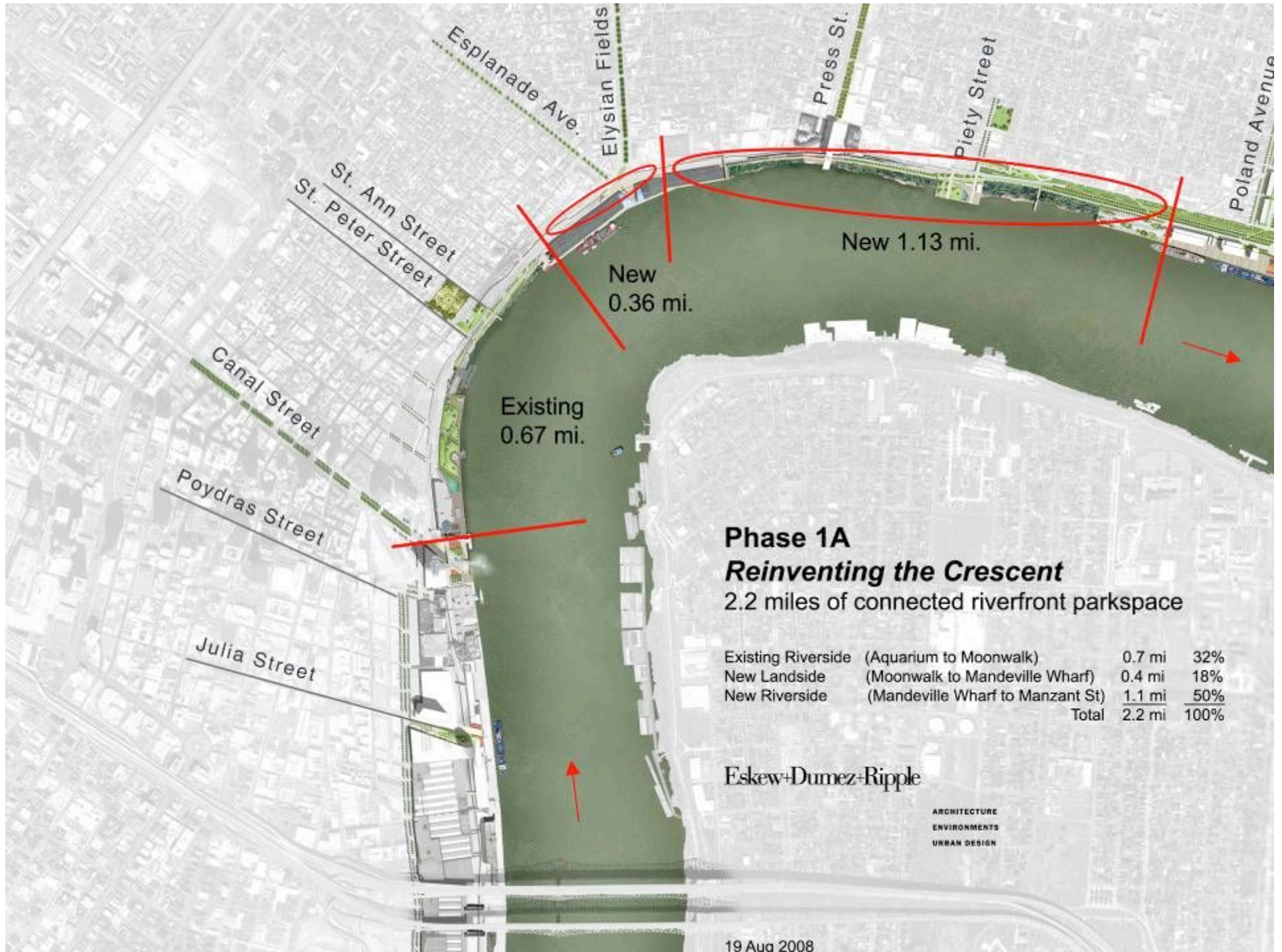
ESKEW+DUMEZ+RIPPLE

HARGREAVES ASSOCIATES

CHAN KRIEGER SIENIEWICZ

MICHAEL MALTZAN

DAVID ADJAYE



19 Aug 2008

PHASE 1A PROJECT SCHEDULE



Public Meeting #1 September 17, 2008

Public Meeting #2 October 7, 2008 (Pending)

Public Meeting #3 October 28, 2008 (Pending)

Key Milestones

Notice to Proceed	September 1, 2008
Schematic Design Start	November 1, 2008
Design Development Start	February 1, 2009
Contract Document Start	May 1, 2009
Bidding/Negotiating Start	November 1, 2009
Groundbreaking	December 1, 2009
Construction Administration Start	December 1, 2009
New Mayor's Inauguration	May 2010
Construction Completion	June 1, 2011
Public Opening	June 2011

FOUR DESIGN GOALS

if we...

- 1** Remove Barriers to River
- 2** Continuous River Access
- 3** Great Gathering Places
- 4** New Iconic Architecture

TO ACHIEVE FIVE ECONOMIC GOALS

then we...

- 5** Great Places to Live
- 6** Stimulate Economic Growth
- 7** Create New Jobs
- 8** Trigger Private Investment
- 9** Increase Tax Revenue

PHASE ONE PROGRAMMING



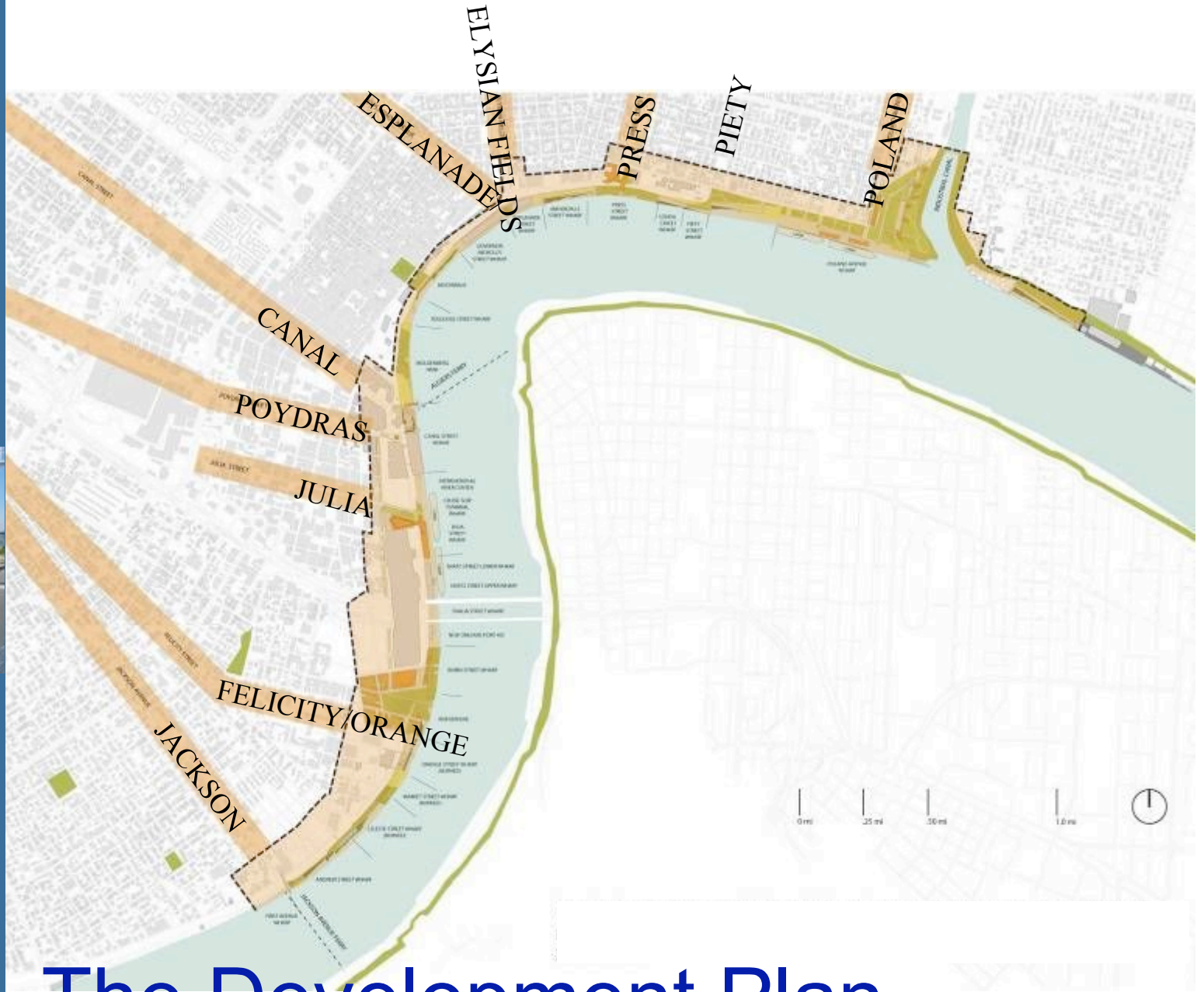
Cafe Sun Deck Expanded Batture
Post Industrial Landscape Restroom Cultural Gathering
Dog Run Cultural Celebration
Picnic River Pedestrian
River Pool Promenade
Terraces Amphitheater Cultural Narrative
Spiritual Sanctuary
Public Art Projection Parking
Solar Panels Screen
Naturalized Native
Continuous Public Access Landscape Wind Turbine
Tree Grove Pier
Skating Performance Lawn
Bike Route
Playground Gardens
Performance
Stage Tot
Shade Structures Lot Recreational
River Turbine Courts



PROJECT AREA

1

Remove the Physical Barriers That Restrict Public Access to the River



The Development Plan

Reinventing the Crescent



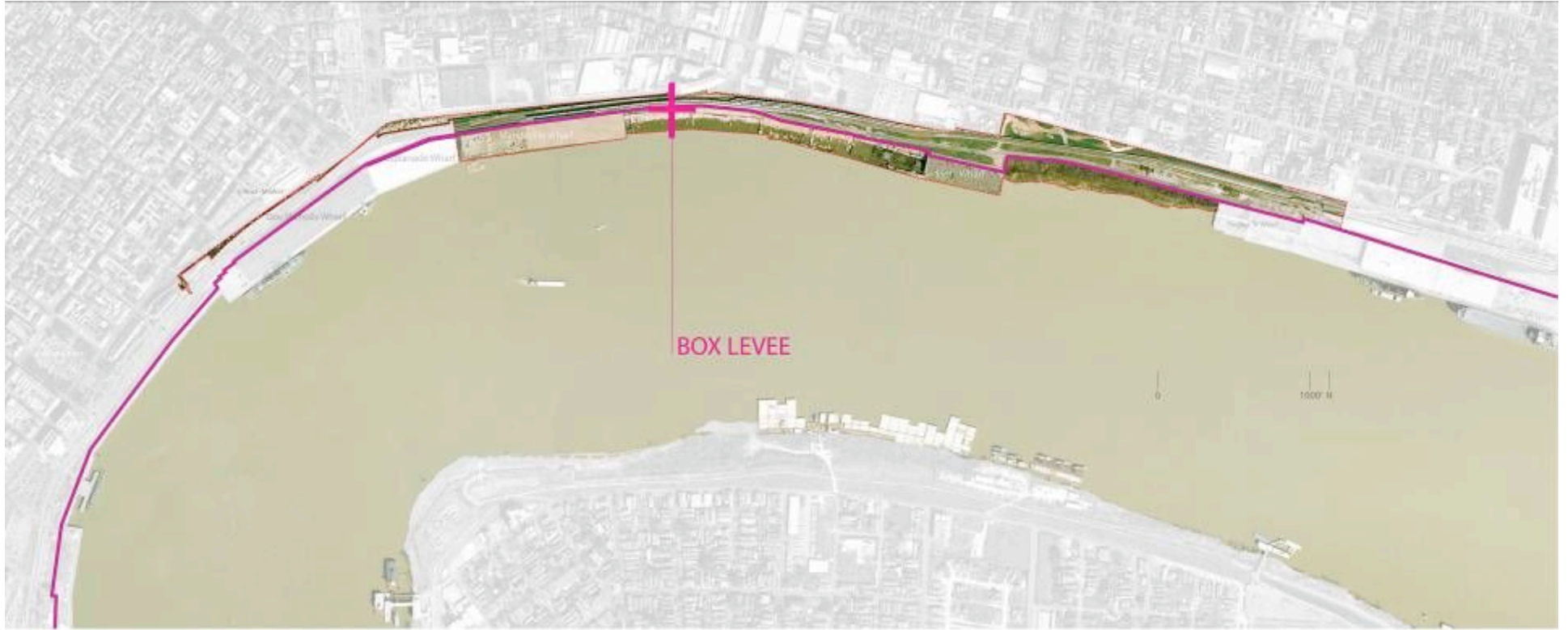
FLOOD WALL



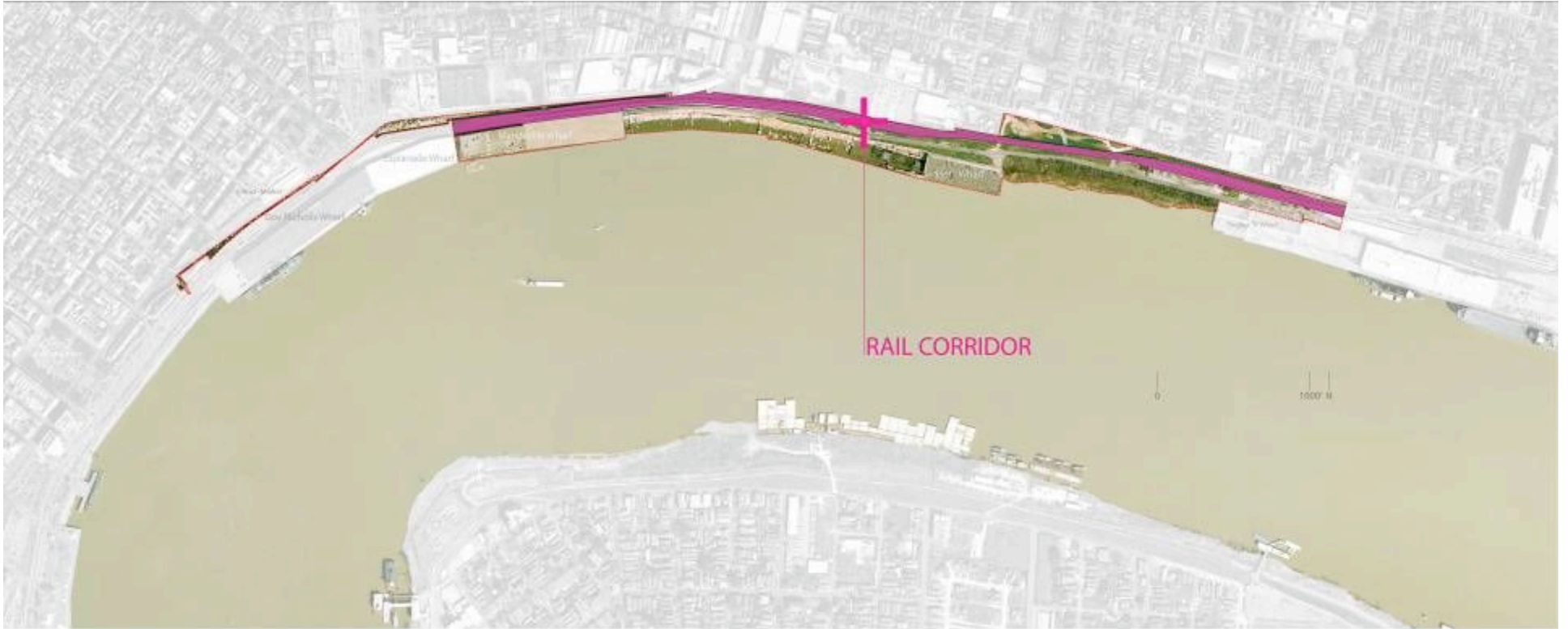
FLOOD WALL

PEDESTRIAN VEHICULAR RAIL

FLOOD GATES



BOX LEVEL



RAIL CORRIDOR



POSSIBLE AT GRADE PEDESTRIAN



POSSIBLE PEDESTRIAN BRIDGE



POSSIBLE PARKING STRATEGIES

2

Create
Continuous
Linear
Access and a
Network of
Great Green
Spaces
Along River's
Edge



The Development Plan

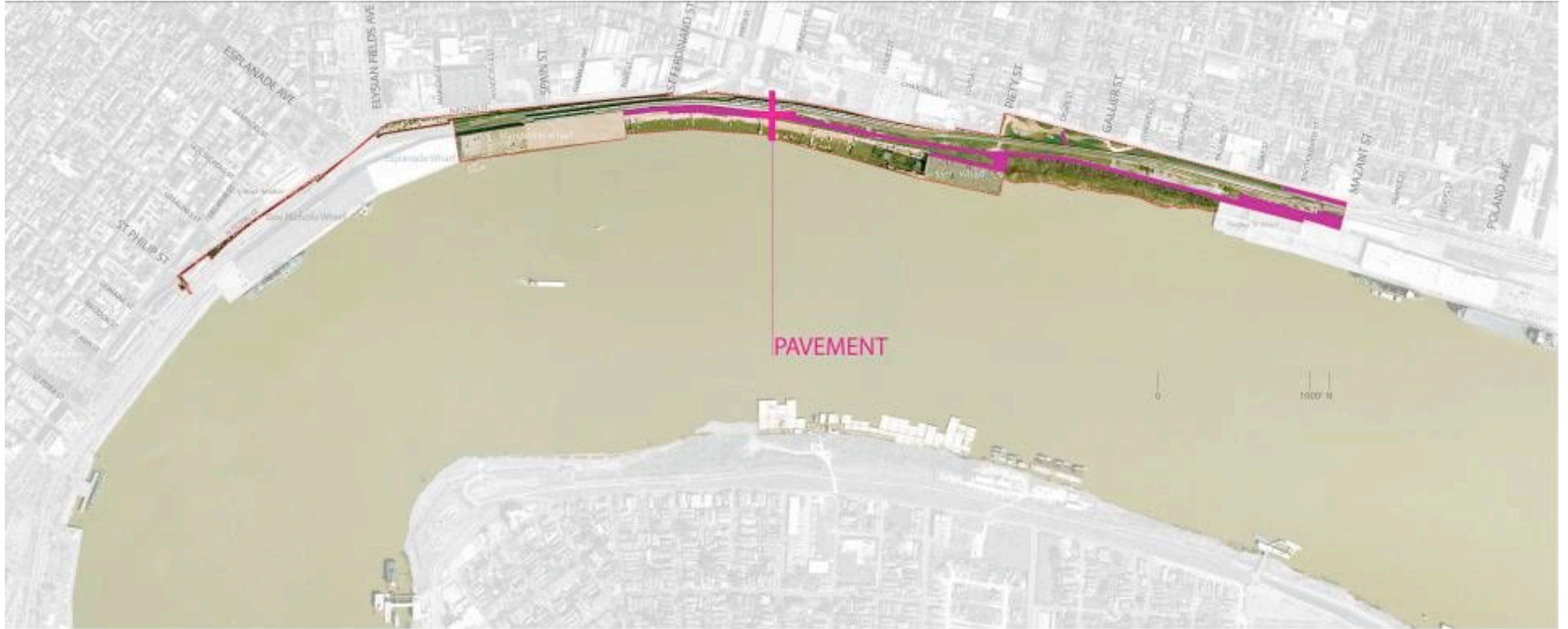
Reinventing the Crescent

New Orleans Riverfront



STREETSCAPE

STREETSCAPE



PAVEMENT



RESIDUAL GRASS + GRAVEL

0 1000 M

RESIDUAL



LAWN

POSSIBLE LAWN



NATIVE LANDSCAPE

POSSIBLE NATIVE LANDSCAPE



POSSIBLE TREE GROVES



DESIGNATED BIKE ROUTE

POSSIBLE BIKE ROUTE

3

Create
Gathering
Places &
Moments of
Distinct
Character
That
Encourage
Civic Activity
&
Community
Energy



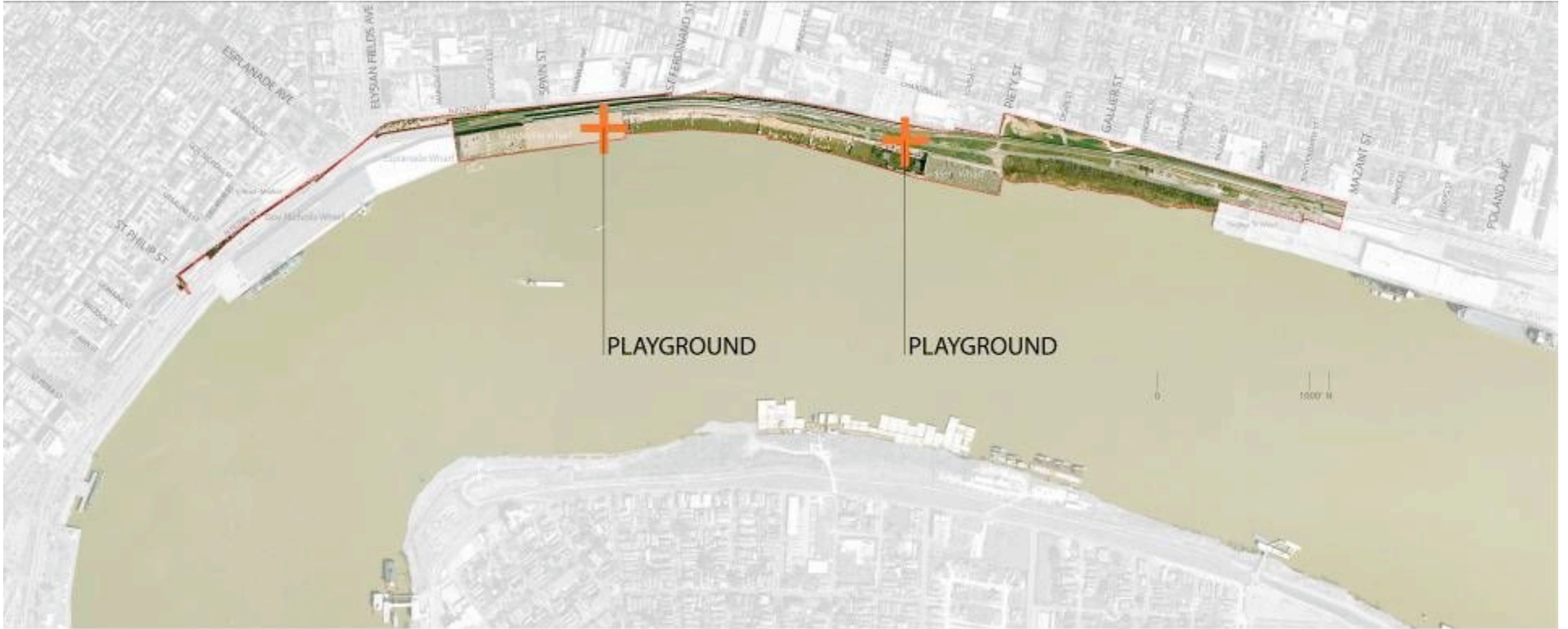
- CULTURAL INFRASTRUCTURE
- 1. SANCTUARY (ENCLOSED RITUAL SPACE)
 - 2. PAVILION (SHADE / RAIN STRUCTURE)
 - 3. PAVILION (SHADE / RAIN STRUCTURE)
 - 4. PAVILION (SHADE / RAIN STRUCTURE)
 - 5. PAVILION (SHADE / RAIN STRUCTURE)
 - 6. PAVILION (SHADE / RAIN STRUCTURE)
 - 7. PAVILION (SHADE / RAIN STRUCTURE)
 - 8. PAVILION (SHADE / RAIN STRUCTURE)

The Development Plan

Reinventing the Crescent



POSSIBLE PEDESTRIAN PIERS



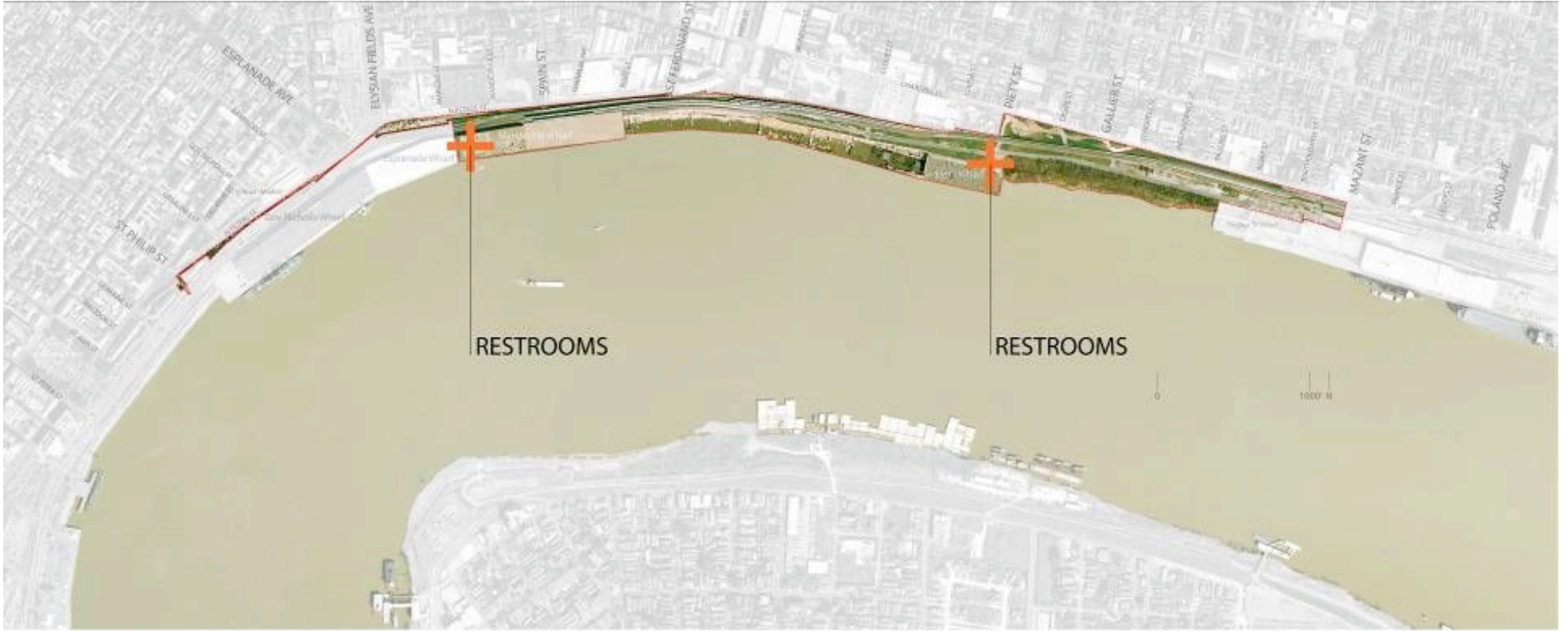
POSSIBLE PLAYGROUNDS



RECREATION COURTS

RECREATION COURTS

POSSIBLE RECREATION COURTS



POSSIBLE RESTROOMS

4

**Build New
Architectural
Landmarks
that Offer
and
Authentic
21st Century
Design Face
for New
Orleans**

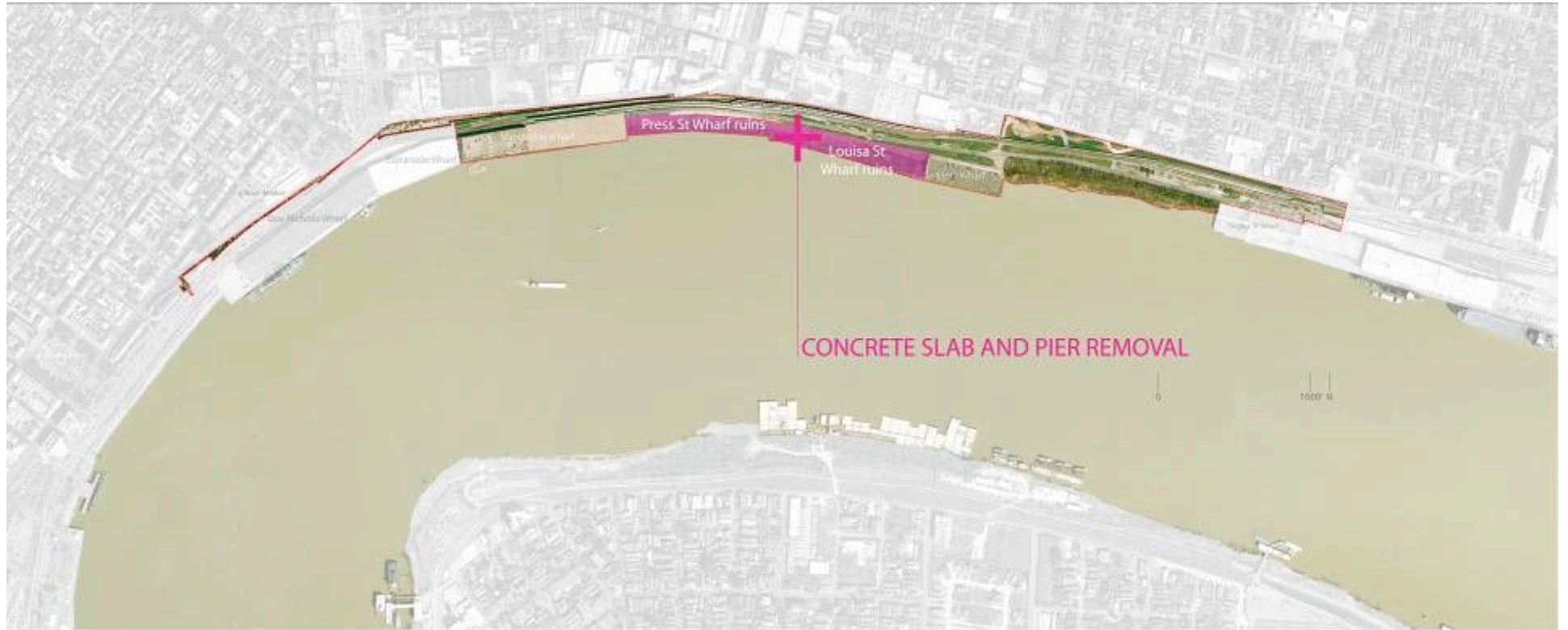


The Development Plan
Reinventing the Crescent

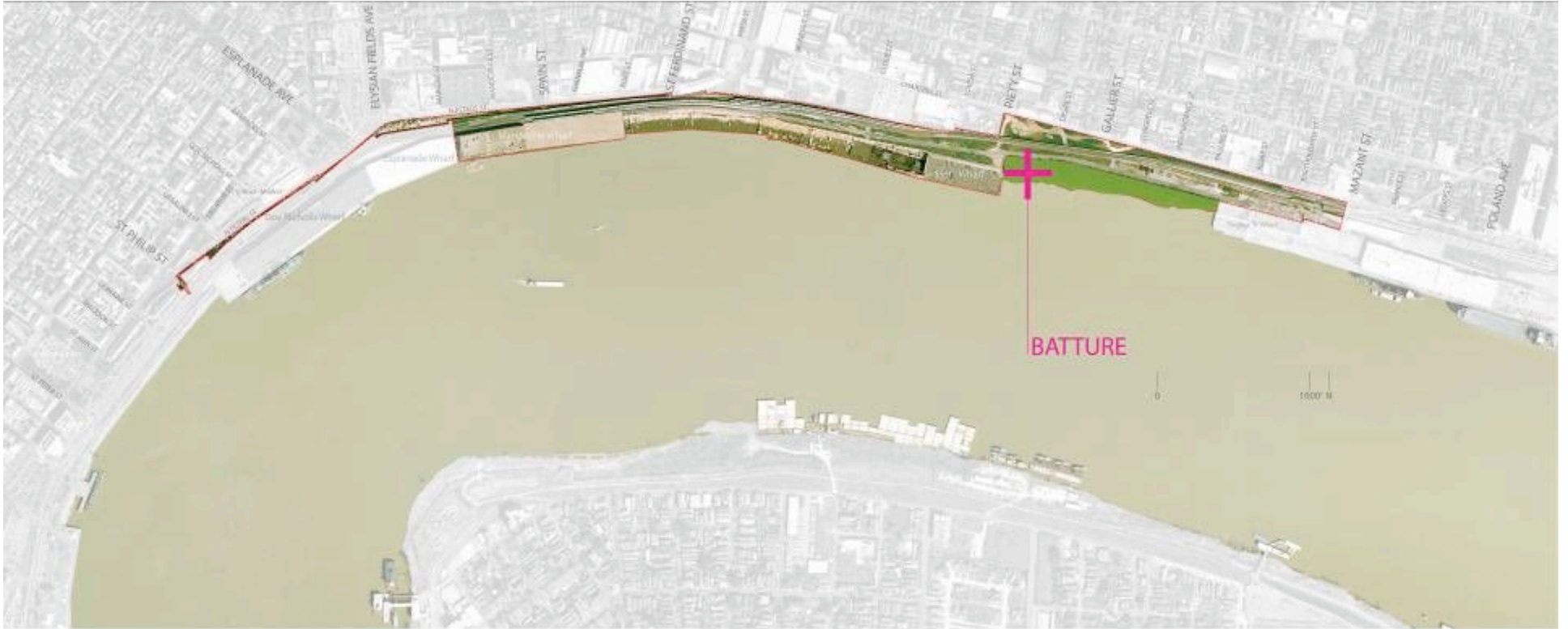
New Orleans Riverfront



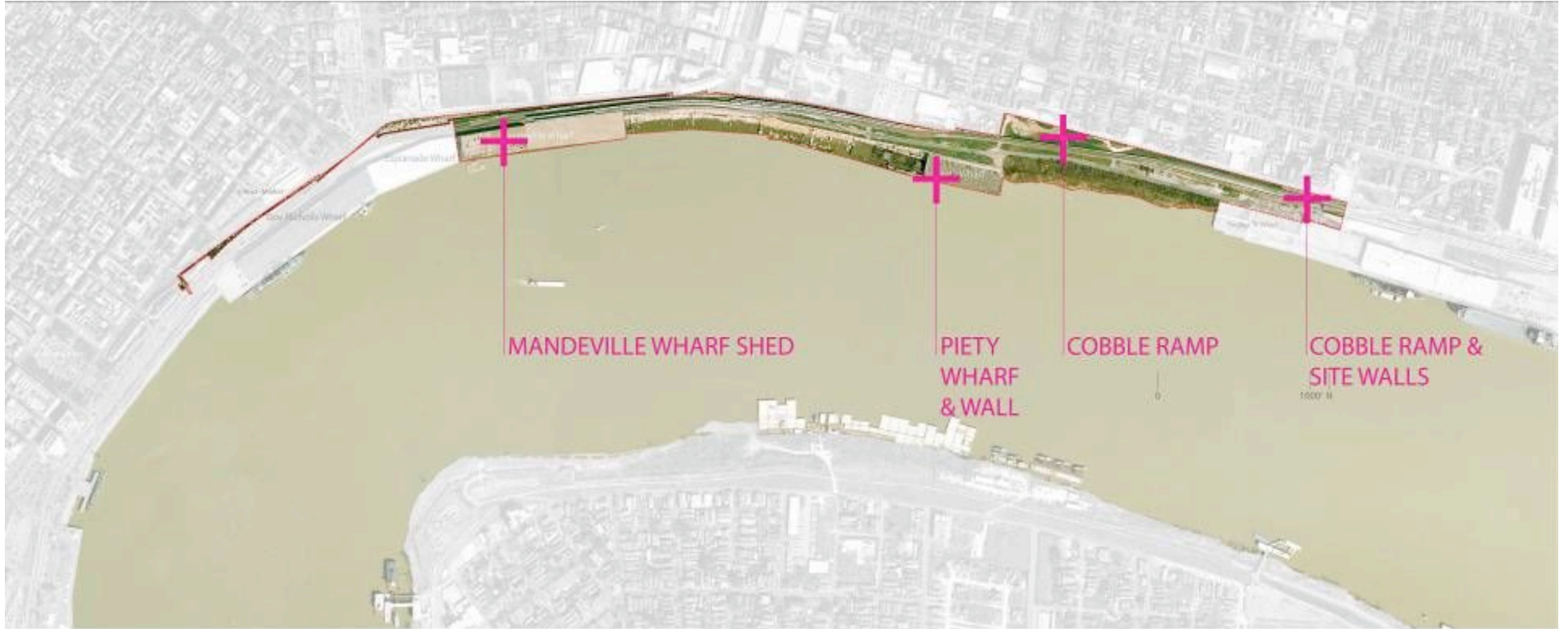
WHARVES TO CONSERVE



WHARVES - CURRENT PORT OF NEW ORLEANS DEMOLITION



BATTURE



ARTIFACTS



POSSIBLE NON-DENOMINATIONAL



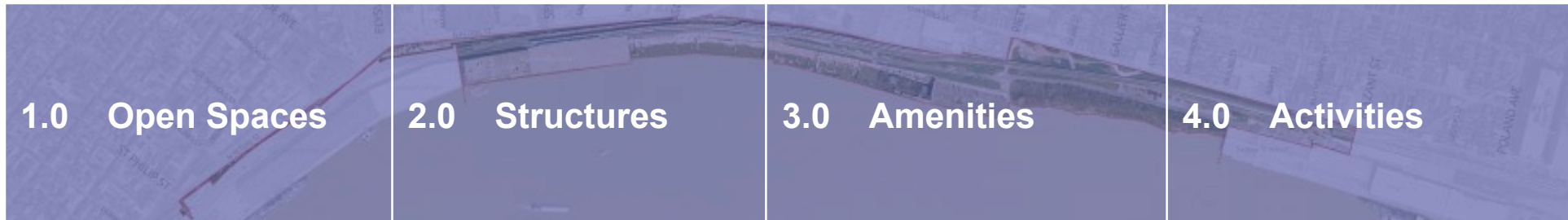
POSSIBLE WIND TURBINES



RIVER TURBINE

POSSIBLE RIVER TURBINES





1.0 Open Spaces

- 1.1 River Terraces**
- 1.2 Performance Lawn**
- 1.3 Farms/Gardens**
- 1.4 Lawns**
- 1.5 Naturalized Meadow**
- 1.6 Tree Groves**
- 1.7 Bike Route**
- 1.8 Pedestrian Promenade**
- 1.9 Expanded Batture**
- 1.10 Parking**
- 1.11 Continuous Access**

2.0 Structures

- 2.1 Piers**
- 2.2 Pedestrian Bridge Over Railroad**
- 2.3 Performance Stage**
- 2.4 River Turbines**
- 2.5 Wind Turbines**
- 2.6 Public Restrooms**
- 2.7 Shade Structures**
- 2.8 Spiritual Sanctuary**
- 2.9 Café/Coffeehouse**

3.0 Amenities

- 3.1 Sun Deck**
- 3.2 River Pool**
- 3.3 Media Projection**
- 3.4 Solar Panels**
- 3.5 Interactive Fountains**
- 3.6 Picnic Tables**
- 3.7 Public Art**
- 3.8 Cultural Narratives**
- 3.9 Interpretive Graphics**
- 3.10 Streetcar Service**

4.0 Activities

- 4.1 Community Gardens**
- 4.2 Recreational Courts**
- 4.3 Playgrounds**
- 4.4 Tot Lots**
- 4.5 Skating**
- 4.6 Skate Boarding**
- 4.7 Cultural Gatherings**
- 4.8 Entertainment Gatherings**

www.neworiverfront.com

September 17, 2008